

**mellerware**<sup>®</sup>

makes life easier

# AROMATIC coffee bean grinder



Classic stainless  
steel design

Lid safety  
switch

Stainless steel  
blades

**2YEAR  
WARRANTY**  
1 YEAR RETAIL + 1 YEAR EXTENDED  
Register Online:  
[www.mellerware.co.za](http://www.mellerware.co.za)

complies with  
INTERNATIONAL  
IEC60335  
SAFETY SPECIFICATIONS

**m**  
150W

**2 YEAR  
WARRANTY**

Model:  
29105A

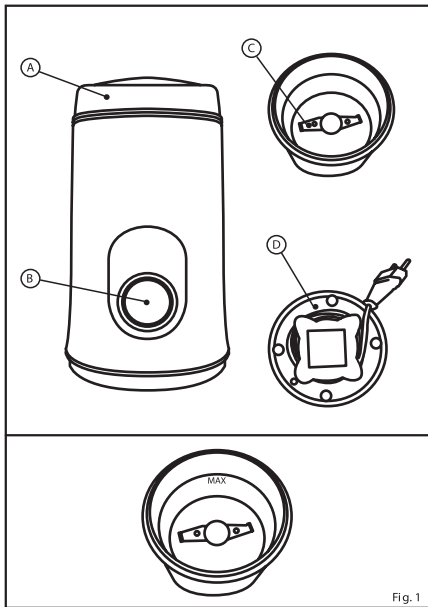


Fig. 1

### Description

- A Lid
- B On/off pushbutton
- C Blades
- D Cord housing

### Safety advice and warnings

- Read these instructions carefully before switching on the appliance and keep them for future reference.
- Failure to follow and observe these instructions may result in an accident.
- Clean all the parts of the product that will be in contact with food, as indicated in the cleaning section, before use.

### Use or working environment:

- The appliance should be used and mounted on a flat and stable surface.

### Electric safety:

- Do not use the appliance if the cable or plug is damaged.
- Ensure that the voltage indicated on the nameplate matches the mains voltage before plugging in the appliance.
- The appliance's plug must fit into the mains socket properly. Do not alter the plug. Do not use plug adaptors.
- Do not use the appliance if it has fallen on the floor, if there are visible signs of damage or if it has a leak.
- Do not force the electrical wire. Never use the electric wire to lift up, carry or unplug the appliance.
- Do not wrap the cable around the appliance.
- Ensure that the electric cable does not get trapped or tangled.
- Do not touch the plug with wet hands.

### Personal safety:

- Before using the appliance ensure that the blades are properly fixed in place.

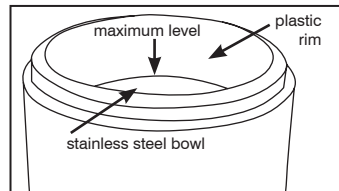
### Use and care:

- Fully unroll the appliance's power cable before each use.
- Do not use the appliance if the on/off switch does not work.
- Do not move the appliance while in use.
- Do not turn the appliance over while it is in use or connected to the mains.
- Do not fill appliance past MAX level indicator. (Fig.1)
- Disconnect the appliance from the mains when not in use and before undertaking any cleaning task.
- This appliance is for household use only, not professional or industrial use.
- This appliance is not a toy. Children should be supervised to ensure that they do not play with the appliance.
- This appliance is intended for adult use. Ensure that this product is not used by the disabled, children or people unused to its handling.
- This appliance should be stored out of reach of children and/or the disabled.
- Check that the lid is closed properly before starting the appliance.
- Do not use the appliance with frozen goods or those containing bones.
- Do not use the appliance for more than 30 seconds at any one time.
- Any misuse or failure to follow the instructions for use renders the guarantee and the manufacturer's liability null and void.

### Instructions for use

#### Use:

- Connect the appliance to the mains.
- Remove the protective cover.
- Fill with coffee beans.
- Put on the protective cover.
- Turn the appliance on using the on/off switch.
- Do not fill with Coffee Beans above the line where the stainless steel bowl meets the plastic rim.



#### Once you have finished using the appliance:

- Stop the appliance by releasing the on/off button.
- Unplug the appliance from the mains.
- Wind up cable and insert into cable housing.
- Clean the appliance.

### Cord housing

- This appliance has a cable compartment situated beneath the product.

### Cleaning

- Disconnect the appliance from the mains and let it cool before undertaking any cleaning task.
- Clean the equipment with a damp cloth with a few drops of washing-up liquid and then dry.

- Do not use solvents, or products with an acid or base pH such as bleach, or abrasive products, for cleaning the appliance.
- Do not submerge the appliance in water or any other liquid, or place it under a running tap.
- During the cleaning process, take special care with the blades, as they are very sharp.
- It is advisable to clean the appliance regularly and remove any food remains.
- If the appliance is not in good condition of cleanliness, its surface may degrade and inexorably affect the duration of the appliance's useful life and could become unsafe to use.

#### **Anomalies and repair**

- Take the appliance to an authorised technical support service centre if problems arise. Do not try to dismantle or repair without assistance, as this may

be dangerous.

- If the connection to the mains has been damaged, it must be replaced and you should proceed as you would in the case of damage.

#### **Ecology and recyclability of the product**

- The materials of which the packaging of this appliance consists are included in a collection, classification and recycling system. Should you wish to dispose of them, use the appropriate public containers for each type of material.
- The product does not contain concentrations of substances that could be considered harmful to the environment.

creative housewares  
🏠 20 Tekstiel St, Parow, Cape Town, 7493, RSA  
✉ P.O. Box 6156 Parow East, 7501, RSA  
☎ +27 21 931 8117 📠 +27 21 931 4058  
Service Centre Helpline: 086 111 5006  
🌐 [www.creativehousewares.co.za](http://www.creativehousewares.co.za)