



JAVLIN[®]
PPE SOLUTIONS

HEAD & FACE PROTECTION

Face Shields & Visors.

Flip Front Welding Helmet (6012)
RATCHET HEADGEAR • CLEAR LENS
1MM CLEAR POLYCARB DEEP LENS



Polycarbonate Face Shield (6016)
BROWGUARD & HEADGEAR
IMPACT RESISTANT POLYCARBONATE SHIELD



Hard Hats.

Jockey Type Hardhat (6035)
HDPE INDUSTRIAL 6 POINT HEADGEAR
LDPE LINER WITH 2 STAGE HEIGHT ADJUSTMENT
STANDARD SIZE • ASSORTED COLOURS



Jockey Type Hardhat Liner (6037)
REPLACEMENT 6 POINT LDPE LINER
TRICOT CUSHION SWEATBAND FOR JOCKEY
TYPE HARDHAT • STANDARD SIZE



Eyewear.

Direct Vent Goggles (6005CL) & Indirect Vent Goggles (6006CL)
WIDE VISION POLYCARBONATE LENS
PVC FRAME WITH VENTS • OPTICAL CLASS 1
MECHANICAL STRENGTH B(120M/S)



Wide Vision Anti-Scratch Goggles (6005AF)
ANTI-SCRATCH & ANTI-FOG • CLEAR
PVC FRAME WITH VENTS • OPTICAL
CLASS 1 • MECHANICAL STRENGTH
B(120M/S)



Wire Mesh Goggles (6161)
WIRE MESH LENS • PVC FRAME
CLEAR SIDE SHIELDS



Eurospec Uncoated Spectacles Clear Lens (6004NC)
POLYCARBONATE FRAME & LENS
OPTICAL CLASS 1 • MECHANICAL STRENGTH F(45M/S)



Eurospec Scratch Resistant Spectacles Clear Lens (6004CL)
ANTI-SCRATCH • POLYCARBONATE FRAME & LENS • OPTICAL CLASS 1
MECHANICAL STRENGTH F(45M/S)



Eurospec Scratch Resistant & Anti-Fog Spectacles Clear Lens (6004AF)
ANTI-SCRATCH & FOG • POLYCARBONATE FRAME & LENS • OPTICAL CLASS 1
MECHANICAL STRENGTH F(45M/S)



Eurospec Scratch Resistant Spectacles Green Lens (6003GREEN)
ANTI-SCRATCH • POLYCARBONATE FRAME & LENS • OPTICAL CLASS 1
MECHANICAL STRENGTH F(45M/S)



Eurospec Scratch Resistant Spectacles Grey Lens (6003GREY)
ANTI-SCRATCH • POLYCARBONATE FRAME & LENS • OPTICAL CLASS 1
MECHANICAL STRENGTH F(45M/S)



Eurospec Scratch Resistant Spectacles Amber Lens (6157AMBER)
ANTI-SCRATCH • POLYCARBONATE FRAME & LENS • OPTICAL CLASS 1
MECHANICAL STRENGTH F(45M/S)



Sporty Uncoated Spectacles Clear Lens (6152NC)
POLYCARBONATE FRAME & LENS
OPTICAL CLASS 1 • MECHANICAL STRENGTH F(45M/S)



Sporty Scratch Resistant Spectacles Clear Lens (6152CL)
ANTI-SCRATCH • POLYCARBONATE FRAME & LENS • OPTICAL CLASS 1
MECHANICAL STRENGTH F(45M/S)



Sporty Scratch Resistant & Anti-Fog Spectacles Clear Lens (6156AF)
ANTI-SCRATCH & FOG • POLYCARBONATE FRAME & LENS • OPTICAL CLASS 1
MECHANICAL STRENGTH F(45M/S)



Sporty Scratch Resistant Spectacles Green Lens (6153GREEN)
POLYCARBONATE FRAME & LENS
OPTICAL CLASS 1 • MECHANICAL STRENGTH F(45M/S)



Sporty Scratch Resistant Spectacles Grey Lens (6153GREY)
POLYCARBONATE FRAME & LENS
OPTICAL CLASS 1 • MECHANICAL STRENGTH F(45M/S)



Sporty Scratch Resistant Spectacles Amber Lens (6154AMBER)
POLYCARBONATE FRAME & LENS
OPTICAL CLASS 1 • MECHANICAL STRENGTH F(45M/S)



**Wrap Around Anti Scratch Spectacles
Clear Lens (6002CL)**

POLYCARBONATE FRAME & LENS
OPTICAL CLASS 1 • MECHANICAL
STRENGTH F(45M/S)



**Wrap Around Anti Scratch Spectacles
Green Lens (6001GREEN)**

POLYCARBONATE FRAME & LENS
OPTICAL CLASS 1 • MECHANICAL
STRENGTH F(45M/S)



**Wrap Around Anti Scratch Spectacles
Amber Lens (6155AMBER)**

POLYCARBONATE FRAME & LENS
OPTICAL CLASS 1 • MECHANICAL
STRENGTH F(45M/S)



**Javlin Sport Anti-Scratch & Anti-Fog
Clear Lens (6162CL)**

POLYCARBONATE FRAME & LENS
OPTICAL CLASS 1 • MECHANICAL
STRENGTH F(45M/S)



**Javlin Sport Anti-Scratch & Anti-Fog
Grey Smoke Lens (6163GREY)**

POLYCARBONATE FRAME & LENS
OPTICAL CLASS 1 • MECHANICAL
STRENGTH F(45M/S)



**Javlin Sport Anti-Scratch & Anti-Fog
Mirror Lens (6164MIRROR)**

POLYCARBONATE FRAME & LENS
OPTICAL CLASS 1 • MECHANICAL
STRENGTH F(45M/S)



**Javlin Cool Anti-Scratch & Anti-Fog
Clear Lens (6165CL)**

POLYCARBONATE FRAME & LENS
OPTICAL CLASS 1 • MECHANICAL
STRENGTH F(45M/S)



**Javlin Cool Anti-Scratch & Anti-Fog
Grey Lens (6166AMBER)**

POLYCARBONATE FRAME & LENS
OPTICAL CLASS 1 • MECHANICAL
STRENGTH F(45M/S)



**Javlin Cool Anti-Scratch & Anti-Fog
Grey Lens (6166GREY)**

POLYCARBONATE FRAME & LENS
OPTICAL CLASS 1 • MECHANICAL
STRENGTH F(45M/S)



Spoggle Anti Scratch, Anti Fog, Grey Lens (6050)

POLYCARBONATE MONO LENS • EFFICIENT
INDIRECT VENTILATION SYSTEM • EN 166 FCE



Spoggle Anti Scratch, Anti Fog, Clear Lens (6246)

POLYCARBONATE MONO LENS • EFFICIENT
INDIRECT VENTILATION SYSTEM • EN 166 FCE



Ear Muffs.

Universal Ear Muffs (6031)
ADJUSTABLE ROTATION CAP
SNR = 27 DB / NRR = 14.71DB



Classic Folding Ear Muffs (6054)
PROFESSIONAL EAR MUFFS
FOLDED ADJUSTABLE HEADBAND
SNR 28DB NRR 27DB



Ear Muffs With Hardhat Attachment (6055)
HIGH END EAR MUFFS WITH
UNIVERSAL HARDHAT ATTACHMENT
SNR 28DB NRR 24DB



Disposable & Reusable Ear Plugs.

Quiet QD30 Corded Ear Plugs (6093)
QUIET • SMARTFIT • 100/BOX



Smartfit Ear Plugs (6095EP)
QUIET • SMARTFIT • 100/BOX



Disposable Foam Corded Ear Plugs (6032)
SNR = 36 DB / NRR = 262DB



Disposable Foam Uncorded Ear Plugs (6033)
SNR = 37 DB / NRR = 32DB



Reusable Corded Ear Plugs (6052-BLUE) & (6052-GREEN)
SNR = 23 DB • TREE SHAPE



Reusable Green Corded Ear Plugs With Container (6052BOX)
SNR = 23 DB • TREE SHAPE



Reusable Banded Type Ear Plugs (6058)
BANDED POD TYPE • FOR
EXTENSIVE USE & CONVENIENT
NECK POSITIONING • SNR 27DB



Ear Plug Dispenser for Uncorded Ear Plugs (6056) & Refill (6057)
REFILL SOLD SEPERATELY • 500 / PACKET
SNR = 37 DB / NRR = 32DB



Respiratory Protection.

FFP1 Dust Mask - Box of 20 (6029)
 NRCS APPROVED • P1-FF1
 DISPOSABLE PARTICLE FILTERING
 RESPIRATOR • EN 149:2001



FFP2 Dust Mask - Box of 20 (6030)
 NRCS APPROVED • P2-FF2
 DISPOSABLE PARTICLE FILTERING
 RESPIRATOR • EN 149:2001



FFP2 Dust Mask With Valve Box of 20 (6030-F)
 NRCS APPROVED • P2-FF2 WITH VALVE
 DISPOSABLE PARTICLE FILTERING
 RESPIRATOR • EN 149:2001



Single Cartridge Respirator (6022)
 HIGH PERFORMANCE EXHALATION VALVE
 FOR USE WITH APPROVED CARTRIDGES
 DESIGNED TO FIT RESPIRATOR



Double Cartridge Respirator (6023)
 HIGH PERFORMANCE EXHALATION VALVE
 FOR USE WITH APPROVED CARTRIDGES
 DESIGNED TO FIT RESPIRATOR



Single Respirator Cartridge
A1 Spray Paint & Organic Gases
 Set of 2 (6044S)



Double Respirator Cartridge
A1 Spray Paint & Organic Gases
 Class 1 - Set of 2 (6044D)



Single Respirator Cartridge
P2 Dust & Fume
 Set of 2 (6024S)



Double Respirator Cartridge
P2 Dust & Fume
 Set of 2 (6024D)



Double Respirator Cartridge
A2 Spray Paint & Organic Gases
 Class 2 - Set of 2 (6042D)



Double Respirator Cartridge
B1 Chemical & Acids
 Set of 2 (6045D)



Double Respirator
Combination Cartridge
 ABEK1 - Set of 2 (6047D)



FFP2 Dust Mask (6036FF2)
TRIPLE LAYERED CONSTRUCTION
ELASTIC EAR LOOPS
ADJUSTABLE ALUMINIUM NOSE CLIP



Disposable Mask (6036SHE)
3 PLY DISPOSABLE MASK
ELASTIC EAR LOOPS
ADJUSTABLE SOFT ALUMINIUM NOSE CLIP

A close-up photograph of a person wearing a black safety glove and an orange high-visibility work jacket. The background is a blurred blue wall.

**HAND
PROTECTION**

Candy Stripe Leather Gloves.

Premium Blue Leather Candy Stripe Gloves (2042-BL)

COW SPLIT A GRADE LEATHER
COTTON DRILL YELLOW &
BLUE CANDY BACK



Premium Chrome Leather Candy Stripe Gloves (2042-CHROME)

COW SPLIT A GRADE LEATHER
COTTON DRILL YELLOW &
BLUE CANDY BACK



Premium Pig Skin Candy Stripe Gloves (2017)

A GRADE PIG SPLIT LEATHER
COTTON DRILL CANDY BACK



Premium Chrome Leather Reinforced Candy Stripe Gloves (2049-PREMIUM)

GREEN LEATHER
REINFORCED PALM
COTTON DRILL CANDY BACK



Grade A Chrome Leather Candy Stripe Gloves (2030)

CHROME LEATHER PALM
COTTON DRILL CANDY BACK



Yellow Leather Freezer Gloves (2054)

YELLOW COW SPLIT SHOULDER
LEATHER • CANVAS DRILL
BACK • FULL SOCK LINING



Chrome Leather Reinforced Candy Stripe Gloves (2049)

GREEN LEATHER
REINFORCED PALM
COTTON DRILL CANDY BACK



American Rigger Gloves.

American Riggers Chrome Leather Palm Gloves (2044)

NATURAL GREY COW SHOULDER SPLIT
LEATHER • COTTON JERSEY PALM LINED
SKY BLUE COTTON DRILL CANDY BACK



American Riggers Full Grain Cowhide Gloves (2048)

BEIGE COWHIDE GRAIN LEATHER
COTTON JERSEY PALM LINED
YELLOW COTTON DRILL CANDY BACK



American Riggers Reinforced Chrome Leather Palm Gloves (2047)

NATURAL GREY COW SHOULDER SPLIT
LEATHER • ROYAL BLUE REINFORCING
COTTON JERSEY PALM LINED • SKY BLUE
COTTON DRILL CANDY BACK





Chrome Leather Gloves.

Chrome Leather Double Palm Gloves 6cm Cuff (2001)

SPLIT LEATHER CHROME LEATHER
DOUBLE LAYER LEATHER PALM & THUMB



Chrome Leather Double Palm Gloves 20cm Cuff (2002)

SPLIT LEATHER CHROME LEATHER
DOUBLE LAYER LEATHER PALM & THUMB



Chrome Leather Double Palm Gloves 40cm Cuff (2003)

SPLIT LEATHER CHROME LEATHER
DOUBLE LAYER LEATHER PALM & THUMB



Premium Chrome Leather Gloves 6cm Cuff (2001AG)

NATURAL GREY CHROME SPLIT LEATHER
DOUBLE PALM • LEATHER THICKNESS
1.2MM



Premium Chrome Leather Gloves 20cm Cuff (GL20L)

NATURAL GREY CHROME SPLIT LEATHER
DOUBLE PALM • GUNN PATTERN
LEATHER THICKNESS 1.4 -1.6MM



Premium Chrome Leather Apron Palm Gloves 5cm Cuff (GL06AP)

NATURAL GREY CHROME SPLIT LEATHER
APRON PALM • GUNN PATTERN
LEATHER THICKNESS 1.4 -1.6MM



Premium Chrome Leather Apron Palm Gloves 20cm Cuff (GL20AP)

NATURAL GREY CHROME SPLIT LEATHER
APRON PALM • GUNN PATTERN
LEATHER THICKNESS 1.4 -1.6MM



Full Grain Palm Leather Gloves 6cm Cuff (TN06LFG)

COTTON TOWELLING LINER
SPLIT LEATHER BACK



Welding Gloves.

Green Leather Fully Welted Lined Gloves 6cm Cuff (2009)
COW SPLIT LEATHER
GAUNTLET • WING THUMB



Green Leather Fully Welted Lined Gloves 15cm Cuff (2056)
COW SPLIT LEATHER
GAUNTLET • WING THUMB



Green Leather Fully Welted Lined Gloves 40cm Cuff (2057)
COW SPLIT LEATHER
GAUNTLET • WING THUMB



Premium Blue Leather Lined Welding Gloves 20cm Cuff (2043)
BLUE A GRADE COW SPLIT LEATHER
GAUNTLET • REINFORCED PALM & THUMB



Premium Blue Leather Lined Welding Gloves 20cm Cuff (2043-BL)
BLUE A GRADE LEATHER GAUNTLET
REINFORCED PALM & FINGERS



Heat Resistant Gloves.

Premium Red Leather Heat Gloves 10cm Cuff (GLHR11)
RED AB GRADE COW SPLIT LEATHER
WELTED & PALM LINED • APRON PALM
KEVLAR THREAD



Premium Red Leather Blanket Lined Heat Gloves 20cm Cuff (2011R)
RED AB GRADE SPLIT COW LEATHER
STANDARD FIVE FINGER PATTERN
APRON PALM • KEVLAR THREAD



Red Leather Blanket Lined Heat Gloves 20cm Cuff (GLHR20)
RED AB GRADE SPLIT LEATHER
APRON PALM • KEVLAR THREAD



VIP TIG Welding Gloves.

Premium Beige Tig Welding Gloves (2000)
DRIVER OR TIG WELDING GLOVES
UNLINED • KEYSTONE THUMB



Premium White Goatskin Tig Welding Gloves (2086)
DRIVER OR TIG WELDING GLOVES
UNLINED • KEYSTONE THUMB



Premium White Goatskin Tig Welding Gloves - 15cm Cuff (2230)
DRIVER OR TIG WELDING GLOVES
UNLINED • KEYSTONE THUMB



Full Grain White Cowhide Gloves (2058)
FULL COTTON LINING
WING THUMB



Full Grain Deerskin Gloves 15cm Cuff (2059)
KEYSTONE THUMB
WELTED & LINED



Latex, PU & Nitrile Coated Gloves.

Commarex Fully Dipped Latex Gloves (2012)
COTTON JERSEY LINER • FULLY COATED YELLOW LATEX • KNITTED WRIST • CRINKLE HAND FINISH



Green Crinkle Latex Coated Grippa Gloves (2063)
13 GAUGE POLYCOTTON LINER
YELLOW WITH GREEN LATEX COATED PALM • CRINKLE FINISH



Black Crinkle Latex Coated Thermal Gloves (2040)
13 GAUGE SEAMLESS ACRYLIC LINER • BLACK LATEX PALM CRINKLE FINISH



Kevlar Liner Nitrile Coated Gloves (2079)
YELLOW KEVLAR LINER WITH BLACK NITRILE COATING





Fully Dipped Crinkle Latex Gauntlet 35cm (2129)
ELBOW LENGTH FULLY COATED CRINKLE LATEX GLOVES 35CM - STANDARD



Commarex Crinkle Latex Gloves (2013)
CANVAS CUFF ELASTICATED BACK



Standard Crayfish Rubber Coated Gloves (2032)
POLYCOTTON LINER 100G LAMINATED ORANGE RUBBER PALM • KNITTED WRIST



Premium Crayfish Rubber Coated Gloves (2231)
POLYCOTTON LINER 140G LAMINATED ORANGE RUBBER PALM • KNITTED WRIST



Triple Dipped Heavyweight Latex Gauntlet Gloves (2120)
TRIPLE DIP CRINKLE LATEX FOR HIGH LEVEL ABRASION WORK & BUSHCUTTING



Orange Latex Coated Grippa Gloves (2051)
13 GAUGE POLYCOTTON LINER ORANGE LATEX PALM CRINKLE FINISH



Premium Blue Nitrile Fully Coated Canvas Cuff Gloves (2065)
COTTON JERSEY LINER 5 FINGERS PATTERN



Premium Blue Nitrile Fully Coated Knit Wrist Gloves (2066)
COTTON JERSEY LINER 5 FINGERS PATTERN KNITTED WRIST



Microfoam PU/Nitrile Coated Flexi Gloves (2078)
 15G BLACK NYLON LYCRA LINER
 WATER BASED PU NITRILE COATING



Microfoam PU/Nitrile Coated Dotted Palm Flexi Gloves (2226)
 15G BLACK NYLON LYCRA LINER
 WATER BASED PU NITRILE COATING
 PVC DOTTED PALM FOR GRIP



Double Coated Sandy Finish Nitrile Flexi Gloves (2070)
 ROYAL BLUE 13 GAUGE NYLON SEAMLESS LINER • FLEXI NITRILE COATED WITH SANDY FINISH



Waterproof Double Coated Foam Latex Flexi Gloves (2225)
 15G SEAMLESS LINER
 FULLY WATERPROOF



Fully Coated Double NBR Nitrile Flexi Gloves (2229)
 13G SEAMLESS LINER
 FULLY COATED LINER



Hi Vis Palm Dipped Double Coated Nitrile Flexi Gloves (2227)
 FLUORESCENT GREEN SOFT FEEL LINER



Double Dipped Palm Coated Nitrile Flexi Gloves (2228)
 DOUBLE COATED
 NITRILE PALM DIPPED



Hi-Vis Micro Latex Coated Flexi Gloves (2099)
 13 GAUGE SEAMLESS FLUORESCENT GREEN NYLON LINER • BLACK MICRO LATEX PALM WITH SANDY FINISH



Black Nitrile Coated Gloves (2039)
 BLACK 13 GAUGE 100% POLYESTER SEAMLESS LINER • SMOOTH FINISH
 NON-BREATHABLE NITRILE COATED



Grey Nitrile Coated Gloves (2067)
 WHITE 13 GAUGE 100% POLYESTER
 SEAMLESS LINER • SMOOTH FINISH
 NON-BREATHABLE NITRILE COATED



Cut 5 Impact Gloves With TPU Protection (2080)
 TPU PROTECTION ON FINGERS
 IMPACT PAD NEOPRENE CUFF
 VELCRO CLOSURE



Green Nitrile Flock Lined Gloves (2021)
 GRIP DIAMOND FINISH ON HAND
 SMOOTH FINISH ON CUFF



Maxiflex, Maxidry, & Maxichem Gloves.

Maxiflex Palm Dipped Microfoam Nitrile Coated Gloves (2087)
 SANDY FINISH
 GREY NYLON LINER
 KNIT WRIST • REF: 42-874



Maxiflex Fully Dipped Microfoam Nitrile Coated Gloves (2088)
 SANDY FINISH
 GREY NYLON LINER
 KNIT WRIST • REF: 42-876



Maxidry Oil Resistant Precision Handling Gloves (2089)
 DRIVERS COATING
 PURPLE & BLACK LINER
 KNIT WRIST • REF: 56-425



Maxidry Oil Resistant Fully Coated Gloves (2090)
 FULLY COATED • OPEN CUFF
 REF: 56-426



Maxicut Cut 3 3/4 Nitrile Coated Gloves (2091)
 CUT 3 • KNIT WRIST
 REF: 34-450



Maxicut Cut 3 Fully Dipped Nitrile Coated Gloves (2092)
 CUT 3 • KNIT WRIST
 REF: 34-305



Maxichem Chemical Resistant Gauntlet Gloves (2093)
 BLACK NITRILE COATED PALM
 SANDY FINISH • REF: 56-635



PVC Gloves.

PVC Medium Weight Knit Wrist Gloves (2006)
COTTON STOCKINETTE LINER • KNITTED WRIST



PVC Medium Weight Gloves - 27cm (2005)
COTTON STOCKINETTE LINER • SAFETY CUFF



PVC Medium Weight Gloves - 35cm (2007)
COTTON STOCKINETTE LINER • SAFETY CUFF



PVC Medium Weight Gloves - 45cm (2094)
COTTON STOCKINETTE LINER • SAFETY CUFF



PVC Shoulder Length Gloves With Extension Cuff (2081)
COTTON STOCKINETTE LINER • PVC ELASTICATED



PVC Extra Heavy Weight Knit Wrist Gloves (2028)
COTTON TOWELLING LINER
ROUGH FINISH • KNITTED WRIST



PVC Extra Heavy Weight Gloves - 27cm (2033)
COTTON TOWELLING LINER
ROUGH FINISH • SAFETY CUFF



PVC Extra Heavy Weight Gloves - 35cm (2052)
COTTON TOWELLING LINER
ROUGH FINISH • SAFETY CUFF



Premium Black Chip PVC Fully Granulated Gloves (2037)
COTTON STOCKINETTE LINER
GRANULATED BLACK CHIPS BACK & FRONT • KNITTED WRIST



Orange PVC Freezer Knit Wrist Gloves (2024)
THERMOPLASTIC PVC • COTTON, FOAM & JERSEY LINING • SMOOTH FINISH • KNITTED WRIST



Orange PVC Insulated Freezer Gauntlet Gloves - 30cm (2095)
THERMOPLASTIC PVC • COTTON, FOAM & JERSEY LINING • SANDY FINISH FOR GRIP



Green PVC Double Dipped Sandy Finish Gloves 27cm Cuff (2035)
COTTON JERSEY LINER



Foam PVC Fluorescent Green Sandy Finish Gloves (2096)
COTTON INTERLOCK LINING



Foam PVC Fluorescent Orange Sandy Finish Gloves (2097)
COTTON INTERLOCK LINING



Green PVC Double Dipped Sandy Finish Gloves - 35cm (2053)
COTTON JERSEY LINER



PVC Premium Quality Gloves to SABS SANS 1228.

**PVC Shoulder Length
Gloves - 60cm (2102)**



**PVC Medium Weight Red/
Brown Knit Wrist Gloves (2103)**



**PVC Medium Weight Red/Brown
Open Cuff Gloves - 27cm (2104)**



**PVC Red/Brown Elbow
Length Gloves - 40cm (2105)**



**PVC Medium Weight Reinforced
Glove Safety Cuff -27cm (2109)**



**PVC Medium Weight Reinforced
Gloves Elbow Length (2110)**



**PVC Heavy Weight Rough Palm
Knit Wrist (2111)**



**PVC Heavy Weight Rough
Palm - 27cm (2112)**



**Pvc Heavyweight Rough Palm
Gloves - 35cm (2113)**



**PVC Red Left Hand, Green Right
Hand Reinforced Safety Cuff
Miner's Gloves - 27cm (2116)**



**PVC Red Left Hand, Green Right
Hand Reinforced Safety Cuff
Miner's Gloves - 35cm (2117)**



**Chemical And Acid PVC SABS
Gloves Knit Wrist (2123)**



**Chemical And Acid PVC
SABS Gloves - 27cm 2124)**



**Chemical And Acid PVC SABS
Gloves - 40cm (2125)**



**Chemical And Acid PVC
Gloves - 60cm (2126)**



Rubber & Latex Gloves.

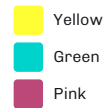
**Industrial Rough Palm Rubber Gloves
Elbow Length (2015)**
ORANGE LINER • CRINKLE FINISH
ON HAND • SMOOTH FINISH ON CUFF



**Industrial Rough Palm Rubber Gloves
Shoulder Length (2055)**
ORANGE LINER • CRINKLE FINISH
ON HAND • SMOOTH FINISH ON CUFF



Latex Household Gloves (2029)
GRIP FINISH ON HAND
SMOOTH FINISH ON CUFF
FLOCK LINED



Black Latex Builders Gloves (2018)
GRIP FINISH ON HAND
SMOOTH FINISH ON CUFF
FLOCK LINED



Neoprene Over Latex (2233)
30CM GAUNTLET
BLUE NEOPRENE OVER
YELLOW LATEX



Cut Resistant Gloves & Sleeves.

**Cut 5 Liner Latex Coated
Gloves (2072)**
CRINKLE LATEX COATED
PALM • LIGHT WEIGHT
HEAT RESISTANT EN 407



**Cut 5 Liner ¾ Nitrile Coated
Gloves (2041)**
13G CHINEEMA FIBRE
¾ DIPPED NITRILE KNUCKLE
WITH HEAT TRANSFER PRINT



**Cut 5 Liner Level F Nitrile
Coated Gloves (2075)**
FULLY DIPPED SANDY
NITRILE PALM WITH
REINFORCING BETWEEN
THUMB AND FOREFINGER



**Cut 5 Leather Reinforced
Sleeves - 36cm (2076)**
CUT 5 13 GAUGE CUT
RESISTANT SLEEVE 36CM



Cotton, Towelling & Inspection Gloves.

Towelling Knit Wrist Gloves (2083)
NATURAL COLOUR 24 OZ TERRY TOWELLING



Towelling Canvas Cuff Gloves (2100)
24OZ TERRY TOWELLING 10CM CANVAS CUFF



Lint Free Inspection Gloves (2084)
SEAMLESS • MACHINE KNITTED • ELASTICATED CUFF



Double Dotted Polka Dot Gloves (2014)
SEAMLESS • MACHINE KNITTED • ELASTICATED CUFF



Cotton Crochet Liner 450g (2013-450)
SEAMLESS • MACHINE KNITTED • ELASTICATED CUFF



Cotton Crochet Liner 750g (2013-750)
SEAMLESS • MACHINE KNITTED • ELASTICATED CUFF



Cotton Crochet Liner 480g (2122GR)
SEAMLESS • MACHINE KNITTED • ELASTICATED CUFF



DISPOSABLES

Examination Gloves.

Blue Nitrile Examination Gloves Unpowdered (2221PF)
BLUE NITRILE • WRIST LENGTH 100 SINGLE GLOVES PER BOX



Disposable Deli Gloves (2020)

LIGHT WEIGHT POLYETHYLENE (LDPE) • HYPOALLERGENIC LATEX FREE • WRIST LENGTH



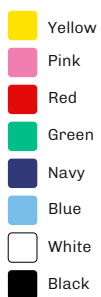
Disposable Sleeve Protectors (8004)

POLYETHYLENE (LDPE) • ELASTICATED AT BOTH ENDS • 100 PER PACKET



Disposable Mop Caps (8002)

SINGLE ELASTICATED 12g/m²
100 PER PACKET



Disposable Overshoes (8006)

SINGLE ELASTICATED 12g/m²
100 PER PACKET



Disposable Aprons (8003)

POLYETHYLENE (LDPE) • LATEX FREE
100 PER PACKET • HYPOALLERGENIC



Disposable Overalls (8001)

NON-WOVEN 50g/m²
POLYPROPYLENE • ELASTICISED WAIST, CUFFS & ANKLES



BODY PROTECTION

PVC Aprons.

White PVC Butchers Apron (3014)
BLOOD & FAT RESISTANT
110 X 70CM • COLOUR: WHITE



PVC Apron - 250g (3015)
250g/m² • 110 X 70CM
COLOUR: YELLOW



PVC Apron - 450g (3016)
450g/m² • 110 X 70CM
COLOURS: WHITE & GREEN



Heavy Duty TPU Apron (5796)

- Thermoplastic polyurethane apron
- Easy & simple to clean, providing excellent hygiene, protection & safety
- Highly resistant to animal oils & fats
- No cracking or shrinking – will keep their shape
- Eyelet weld has been developed to withstand the toughest conditions
- Size: 115 x 90cm
- Colour: white



Fall Arrest Systems.

Safety Harness With Scaffold Hook (6049)
D.LANYARD SCAFFOLD HOOK
SABS APPROVED



Safety Harness Belted, Energy Absorber, Double Lanyard & Scaffold Hooks (6068)
SABS APPROVED



Safety Harness With Snap Hook (6048)
D.LANYARD SNAP HOOK
SABS APPROVED



Kidney Belt (6043)
SIZES: S - XXL





Safety Footwear.

Javlin Safety Boot (JAVBOOT)

CE EN ISO 20345 • NRCS APPROVED
PREMIUM QUALITY GENUINE LEATHER UPPERS
STEEL TOE CAP (200J IMPACT & 1500KN COMPRESSION)
OIL RESISTANT OUTSOLE
DUAL DENSITY PU OUTSOLE
HEAT & SLIP RESISTANT SOLE
SHOCK ABSORBENT HEEL
BREATHABLE PRE-MOULDED EVA INSOLE
ERGONOMIC PADDED ANKLE COLLAR
PADDED TONGUE



Gum Boots.

Black Knee Length Heavy Duty Steel Toe Recycled Gumboot (NEP4003-BB)



White/Grey Knee Length Heavy Duty Steel Toe Gumboot (NEP4003-WG)



White Knee Length Heavy Duty Metaguard Steel Toe & Midsole Gumboot (NEPSPML02-WH)



Black/Grey Knee Length Heavy Duty Metaguard Steel Toe & Midsole Gumboot (NEPSPML02-BG)



Black/Ivory Knee Length General Purpose Gumboot (NEP4001-BI)



White/Grey Oil & Acid Resistant Gumboot (NEP4001-WG)



Black Knee Length General Purpose Gumboot (NEP4001-BB)



Black/Grey Knee Length Heavy Duty Steel Toe Gumboot (NEP4003-BG)



Women's Gum Boots.

Women's Black Calf Length Gumboot (NEP4002-BB)



Women's White Calf Length Gumboot (NEP4002-WW)



Women's White/Grey Oil & Acid Resistant Gumboot (NEP4002-WG)





Welding Clothing.

Chrome Leather Apron 60 x 90cm (LAPRON90) & Chrome Leather Apron 60 x 120cm (LAPRON120)



- A grade one piece chrome leather
- Riveted neck & waist straps with metal buckles
- Sizes: 60cm x 120cm & 60cm x 90cm
- Leather thickness up to 2mm

Chrome Leather Ankle Spats (SLANKL)



- A grade chrome leather spats with straps & metal buckles
- Reinforced with metal chain
- Stress points riveted
- Leather thickness: minimum 1.4mm – 1.6mm

Chrome Leather Knee Length Spats (SLKNEE)



Chrome Leather Bib & Brace (6338)

A GRADE LEATHER • ADJUSTABLE STRAP • METAL BUCKLES • SIDE OPENING • BRASS PRESS STUDS



Chrome Leather Jacket (6337)

A GRADE LEATHER
BRASS PRESS STUDS



Chrome Leather Yoke (LYOKE)

A GRADE LEATHER
BRASS PRESS STUDS



Chrome Leather Hood (LHOOD)

A GRADE LEATHER
NECK & SHOULDER PROTECTION



Reflective Wear.

EN4 Hi-Vis Reflective Vest (6354 - Orange)

POLYESTER TRICOT
50MM SILVER REFLECTIVE TAPE
ZIP FRONT • PVC ID POUCH



Hi-vis Orange

EN4 Hi-Vis Reflective Vest (6354 - Lime)

POLYESTER TRICOT
50MM SILVER REFLECTIVE TAPE
ZIP FRONT • PVC ID POUCH



Hi-vis Lime

EN4 Hi-Vis Reflective Vest EN20471 (9303)

POLYESTER TRICOT • 50MM SILVER
REFLECTIVE TAPE (EN 20471)
VISLON ZIP FRONT • PVC ID POUCH



Hi-vis Orange

Hi-vis Lime

Hi-Vis Maxi Bib (9300)

19MM SILVER REFLECTIVE TAPE (EN 20471)
STRIP ON FRONT • X ON BACK • WAIST TIES



Hi-vis Orange

Hi-vis Lime

Hi-Vis Reflective Cross Over Bib EN20471 (9305)

POLYESTER TRICOT • 50MM SILVER
REFLECTIVE TAPE (EN 20471)
ADJUSTABLE VELCRO ON WAIST



Hi-vis Lime

Hi-Vis Reflective Traffic Jacket (6323)

POLYESTER TRICOT 130g/m²
POLYESTER MESH AIRTEX 150g/m²
20MM & 50MM SILVER REFLECTIVE TAPE
(EN 20471 CLASS II)



TAPE



50mm Orange-Silver-Orange Reflective Tape (RT50OS20)

50MM WARNING BAND
HIGH VISIBILITY DAY GLO FLUORESCENT ORANGE WOVEN WEBBING (11G)
WITH 20MM SILVER REFLECTIVE TAPE STITCHED ON (160 MICRON)
50 WASH CYCLES @ 60°C
RETRO-REFLECTIVE COEFFICIENT: $\geq 380\text{cd}/(\text{lx}\cdot\text{m}^2)$
100% POLYESTER BACKING ON SILVER TAPE
EN 20471



50mm Lime-Silver-Lime Reflective Tape (RT50LS20)

50MM WARNING BAND
HIGH VISIBILITY DAY GLO FLUORESCENT LIME WOVEN WEBBING (11G)
WITH 20MM SILVER REFLECTIVE TAPE STITCHED ON (160 MICRON)
50 WASH CYCLES @ 60°C
RETRO-REFLECTIVE COEFFICIENT: $\geq 380\text{cd}/(\text{lx}\cdot\text{m}^2)$
100% POLYESTER BACKING ON SILVER TAPE
EN 20471



50mm Pink-Silver-Pink Reflective Tape (RT50PSP)

50MM WARNING BAND
HIGH VISIBILITY DAY GLO FLUORESCENT PINK WOVEN WEBBING (11G)
WITH 20MM SILVER REFLECTIVE TAPE STITCHED ON (160 MICRON)
50 WASH CYCLES @ 60°C
RETRO-REFLECTIVE COEFFICIENT: $\geq 380\text{cd}/(\text{lx}\cdot\text{m}^2)$
100% POLYESTER BACKING ON SILVER TAPE
EN 20471



50mm Silver Reflective Tape (RT50SI)

50MM SILVER REFLECTIVE TAPE (160 MICRON)
50 WASH CYCLES @ 60°C
RETRO-REFLECTIVE COEFFICIENT: $\geq 380\text{cd}/(\text{lx}\cdot\text{m}^2)$
POLYCOTTON BACKING
EN 20471